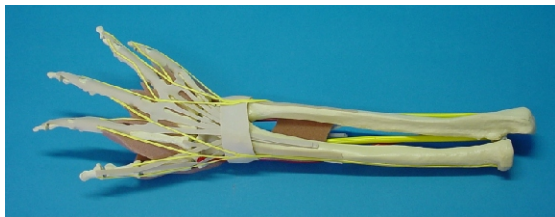


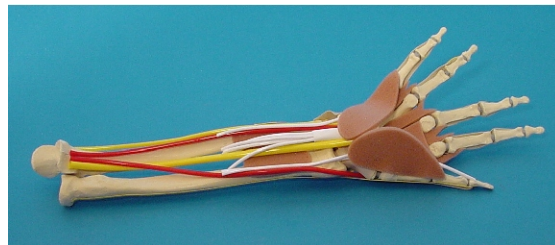
## Hand Program

The new artificial hand model includes the hand and forearm skeleton and important anatomical structures (muscles, tendons, retinacula, nerves a.s.o.) in a foam covering to simulate skin and subcutaneous tissue. The new model has been developed to allow more realistic teaching activities for internal and external fixation of hand and wrist fractures, non-unions, osteotomies or arthrodesis. The surgical approach and adequate soft tissue handling - which may be crucial factors for the functional end result, especially in the hand - will become important aspects of the practical exercises. The following bone specimens are available intended for ORIF of typical fractures or reconstructive procedures.



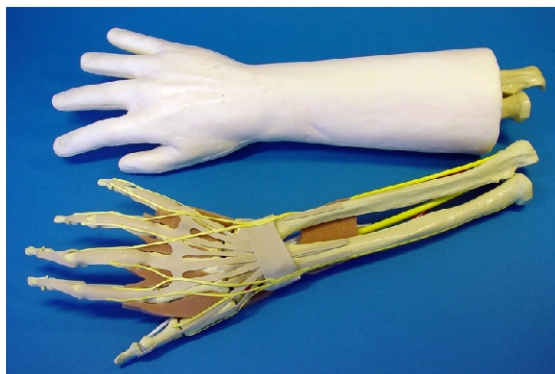
### 9030.0 Hand sgl bone fx demo

Description	Fractured right single bone Hand, Radius and Ulna. Major structures including nerves, muscles, vessels and tendons attached.
Dimensions	Overall length: 448mm
Material	Solid foam
Fracture	Polytraumatic hand model, see separate fracture chart 9030
Remarks	Delivered with additional cancellous bone block



### 9031.0 Hand sgl bone fx malun. demo

Description	Entire right single bone Hand, Radius and Ulna with distal Malunion at MCPV. Major structures such as nerves, muscles, vessels and tendons attached
Dimensions	Overall length: 448mm
Material	Solid foam
Fracture	Distal radius fracture. Bennet fracture
Remarks	Delivered with additional cancellous bone block



### 9030.2 Hand sgl bone fx foam

Description	Fractured right single bone Hand, Radius and Ulna. Major structures as nerves, muscles, vessels and tendons attached. In foam coat.
Dimensions	Overall length: 448mm
Fracture	Polytraumatic hand model, see separate fracture chart 9030
Remarks	Delivered with additional cancellous bone block