

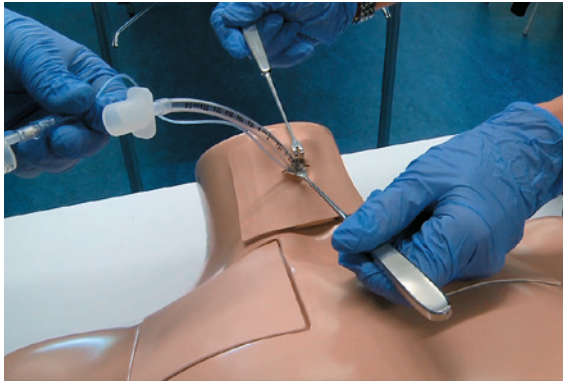


**SYNMAN Compact**  
Manikin for ATLS Team Training



perfectly educated with synbone

**SYNBONE®**



### Cricothyroidotomy

Great anatomical design and excellent performance



### Needle Thoracentesis

The ribs and clavicle must be palpated for correct entry point



### Chest Tube Insertion

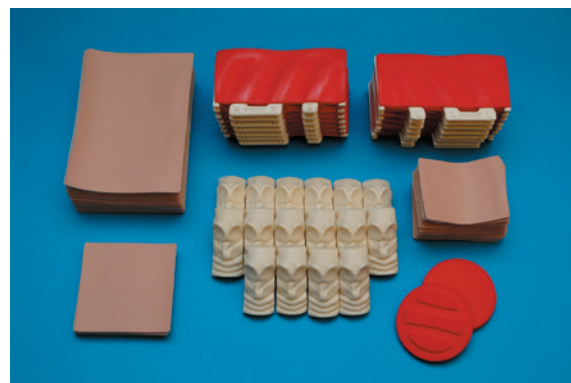
Very realistic with lung feature, multiple foam layers and correct rib separation, along with a unique and sophisticated method of part replacement



**Solid travel case** provides compact storage and safe transport.



**SYNMAN Compact** is set up and ready to use in less than 5 minutes



**Replacement parts** can be quickly and easily changed without the use of tools. Purchase individually or in a set for 16 or 20 participants

# SYNMAN Compact – new training torso for the 9th Manual Edition

SYNMAN Compact is a perfect torso model for the ATLS Team Training based on the 9th Manual Edition. This new model was officially acknowledged in 2012 by the ACS/ATLS.

It is the ideal torso if you want to perform the Cricothyroidotomy, Needle Thoracentesis and Chest Tube Insertion procedures.

The torso is re-usable and all replacement parts may be easily replaced without the need for additional complicated tools.

- SYNMAN Compact is set up and ready to use in less than 5 minutes (no power hook-up required)
- Replacement parts can be quickly and easily changed without additional tools
- No need to return replacement parts after use
- Model is easy to clean
- No expensive investment and therefore keeps your participant costs low
- Eliminates use of animals
- Everything you need in one training model
- Solid case provides compact storage and safe transport

## Success Story and Testimonials

SYNMAN and SYNMAN Compact are being used throughout the world. You will find them in Switzerland, Germany, Italy, Portugal, India, Singapore, USA, and other countries. Our customers include ATLS Centers, Military facilities, Hospitals and Universities.

«The preparation of the SYNMAN models is much easier than in the past when we used animals. Within 10 minutes the models are ready, we can start the skills session, and we do not need special rooms. It provides really easy handling and preparation.»

*Maria Lampi, National ATLS Coordinator  
Sweden*

«My favourite exercise is the chest tube insertion because it is very close to reality. The students can use the instruments and the force feedback they get from the rib and the muscles is very close to real life.»

*Dr. Thomas Beck, Hospital Oberwallis,  
ATLS Instructor Switzerland*

Don't wait! Join the SYNMAN (Compact) family today.

# Perfectly educated with SYNBONE.

Since 1988 SYNBONE has been committed to being the preferred partner in providing excellent anatomical workshop models and services to educate surgeons and operating room personnel worldwide. We are always here for your enquiries and look forward to hearing from you.

SYNBONE AG  
Neugutstrasse 4  
CH-7208 Malans  
Phone: +41 (0)81 300 02 80  
Fax: +41 (0)81 300 02 89  
sales@synbone.ch  
www.synbone.ch